

2003–2004 Board

Officers

Kathy Bowles
Chairman of the Board
Richard Whitmore
President
Caesar Perales
Secretary/Treasurer

Committee Chairs

Scott Sommer/Lia DeTomasi
Allocations
Leslie de Boer
Communications
Michele Poloka
Carol Marquis/Kitty Rudman
Fundraising
Heather Shotwell
Recruitment

Programs/Curriculum

Larry Margerum
Programs/Curriculum: K–8
Kate Hardy/Colleen McCormick
Science Program
Joy Rosenberg/Dorothy Owens
Art Program
Deirdre Shea/Claudia McCarthy
Music Program
Mary McCosker
Social Studies Program
Myrna Kimmelman
Program Manager
Tammy Borosky
Program Administrative Assistant

School Representatives

Louise Bourassa
Grades K–5
Bonnie Field/Lynn Gitomer/
Kathy Lefanowicz
Stanley
Jill Wallace/Carol Applebury
Acalanes
Darci Chan/Kim Stewart
Springhill
Louise Bourassa
Happy Valley
Michael Olson
Lafayette
Nancy Falk
Burton Valley
Jackie Carson
Recording Secretary
John McCormick
Webmaster
Sandy Mouat
Media Liaison
Chris Schiavello/Nancy Hughes
Hospitality
Margie Darlington
Fundraising Administrative Assistant



The Faces of LASF

Annual Report Credits

Copywriting and design:
Leslie de Boer/Full Spectrum
(925) 939-4260

Printing: Excel Graphics
(925) 552-9998

Annual Report for the 2003–2004 Year
Lafayette Arts & Science Foundation



The Lafayette Arts & Science Foundation makes a difference in the education of every child in Lafayette’s public schools.

For 23 years, the Lafayette Arts & Science Foundation has been an active force in our community. A private, nonprofit education foundation run by volunteers, LASF provides top-quality curriculum-based programs and support in the areas of science, math, history, writing, foreign language, technology, art and music to the students of all of Lafayette’s public schools. Contrary to its name, LASF does not focus simply on arts and science—it is much broader: *LASF is truly the education foundation of Lafayette.*

Founded in 1980 in response to education cutbacks resulting from Prop. 13, LASF helps fill gaps in public education. Although LASF operates primarily as a program-driven organization that develops and delivers proven, ongoing curriculum enhancement, we maintain strong partnerships with the two school districts we serve—working hard to ensure that our programs are appropriate, relevant and integrated into the districts’ curriculum. *Now more than ever* we are working closely with the districts to help mitigate the impacts of budget reductions while maintaining the integrity of our programs, and we continue to explore ways that we can help minimize the effect of the budget crisis on our community’s students.

A note about this report:

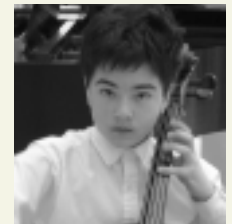
In this year’s annual report we thought we’d do something different. In addition to our standard reporting on finances, programs and donors, we wanted to put a more personal face to the foundation. To that end, we asked a few students, LASF instructors, classroom teachers and administrators for their own words about what LASF means to them. We hope this format helps you better understand what we do and how we make a difference.

Our mission:

To support and enrich the education of every child in the Lafayette public schools through a broad community-based effort.

Who wins:

The beneficiaries of our programs are the 4,682 students of Burton Valley, Happy Valley, Lafayette and Springhill Elementary Schools, Stanley Middle School and Acalanes High School.



Matthew Johnson
Stanley 7th grader

“It was great when our string orchestra was selected to be the demonstration sight-reading orchestra for the Bay Area CMEA conference. It was an even bigger thrill when two of us were chosen to represent Stanley at the Bay Area Honor Orchestra—and when I was selected to be the principal cellist. LASF has helped make Stanley’s music program tops in the whole Bay Area.”

For a wealth of information about LASF and the programs it provides to the students in Lafayette’s public schools, visit our Web site:

www.lasf.org

How We Operate

Unlike most education foundations that raise money and turn over the proceeds to their school district, LASF has its own vision about how to maximize its value to our schools. To that end, we take an active role in identifying needs, developing appropriate programs in concert with teachers and administrators, delivering content and evaluating effectiveness.

In our four elementary schools, LASF primarily develops and delivers comprehensive classroom programs in science, art, music and social studies that address, supplement or complement grade-level appropriate curricula. We also produce or support ongoing events such as art and science fairs, music festivals and drama productions.

At Stanley Middle School, LASF delivers science, writing, social studies/art and health education programs in the classroom that supplement and enhance district-provided curricula. We also provide support for choral and instrumental music instruction, drama, foreign language and technology.

LASF is unique.

Unlike many education foundations, LASF fulfills its mission primarily through developing, refining, staffing and delivering high-quality, curriculum-based programs in the classroom. Active volunteers, dedicated classroom instructors, supportive teachers and administrators, and a committed community make it all possible.

At Acalanes High School, our model changed dramatically last year. Prior to the 2003–04 school year, LASF funded a broad range of special programs, equipment purchases and pilot programs at Acalanes. Last year, however, at the request of the high school district, we pooled our funds with the Parents Club to salvage a total of 18 electives for the current school year that otherwise would have been eliminated due to budget cuts. In response to a subsequent request this year, we have agreed to make a comparable commitment for the 2004–05 year. At the same time, we continue to provide support for various other Acalanes programs.

LASF has also historically awarded annual allocation grants to teachers and others to fund pilot initiatives or unique one-time programs. We scaled back our program this year, rerouting earmarked funds to help our districts with programs or supplies that in better economic times have been funded by the schools themselves, but we are committed to offering it again for the fall of 2004.

Our Programs

From hands-on art classes to Writing for Mastery, LASF brings unique and enriching learning experiences to our schools. These pages provide a glimpse into some of the programs and curriculum that our students enjoy.

The Visual Arts

Understanding. Appreciation. Confidence.

These—and more—are the benefits that students gain through LASF's intensive visual arts programs. From kindergarten through 12th grade, students are exposed to a wide range of artists, styles and media—learning not only technique but art history, criticism and aesthetics.

Elementary school

Hands-on programs in the classroom delivered by specially trained LASF art instructors cover a range of artists, styles and media.

Sculpture and Ceramics
Printmaking
Watercolor Relief
Art History/Visual Literacy
Portraiture
Annual Art Fairs



Gabrielle Brody
Springhill 5th grader

"I think it is a lot of fun that instructors from LASF come into the classroom. You are able to use your hands. The instructors who come here are very nice and patient. They make the projects really fun and interesting."

Middle school

At Stanley, art instruction is tied to the social studies curriculum, providing rich and eye-opening context to the subjects at hand.

Cave Art
Greek Vases
Chinese Brush Painting
Egyptian Mummy Cases
Bookbinding
Printmaking
(using rare antique printing presses)



Erin Caldwell
Springhill Special
Education Teacher

"My special education class has been a lucky recipient of LASF art teaching for years. My class always looks forward to our bimonthly sessions and is disappointed when it is an off week. In keeping with our differentiated educational program, the LASF art lessons are always appropriate and are easily adapted to the various special needs of our class. The products produced by my students are unique, creative and fabulous! We proudly display our artwork in class and have a special bulletin board devoted just to LASF art. We love art!"

High school

At Acalanes, LASF provides funding for art and photography classes through equipment purchases and special projects.

Funding of electives
Support through purchase of equipment and supplies
Artist-in-Residence program
Photography supplies

Science and Math

Inquisitiveness. Investigation. Discovery.

From dissecting a lamb's eye to examining a drop of local creek water under a microscope, LASF brings science and math to life with hands-on experiences rarely found in public schools today.

Elementary school

"Minilabs" provide nearly 1,000 hours of hands-on science for grades K-5.

The Senses
Tools of Science
Exploring Our Earth
Science Ideas
Life in a Drop of Pond Water
Magnetism and Electricity
Chemistry
Physiology
Energy and Machines

Middle school

Hands-on labs continue at Stanley where LASF delivers more than 600 hours of instruction.

Kids in Creeks
Optic Topics
Microbiology
Acid Rain
Harnessing Electrons
Health Education
Heart Dissection
Brain Study
Rube Goldberg projects
Science Fairs

High school

At Acalanes, LASF has provided funding for equipment and supplies to support ongoing science curriculum, and pools its resources to fund classroom sections for which public funding has been cut.

Math competition coaching
Math instruction and tutoring
Riparian Classroom
Purchase of supplies for science labs
Math competition



Janet Thomas
Acalanes Science Teacher

"The enrichment that LASF provides for science education in the Lafayette schools is enormously beneficial to our students. Many teachers throughout our state have dreams of how to improve education, but budget constraints and lack of support provide a dead end. LASF, on the other hand, is an engine that allows and promotes creative, high-quality, student-centered learning opportunities. I wish all public schools were able to benefit from such a source of support.

For example, here at Acalanes, we now have a beautiful outdoor creekside classroom, used weekly by our Environmental Science classes and in the Spring by our Biology classes. The outdoor benches and tables bordering the creek were purchased with LASF grant money, as were lab supplies and reference books used for environmental monitoring. Indoors, a multi-faceted media projector is used almost every period by one of our science teachers to enhance instruction. In chemistry classes, we use sensitive balances and demonstration materials purchased with funding from LASF. Our biology teachers have created a comprehensive, contemporary genetics unit made possible with LASF support. I am grateful daily for what LASF allows us to do."



Ellie Poling
Lafayette 1st grader

"I liked learning about the Chinese money with Miss Joy and Miss Dorothy."

[referring to the Chinese New Year unit provided to all first graders]



Lore Musser
LASF Writing for Mastery Instructor

"The Writing for Mastery program reaches more than 550 Acalanes students. The brainchild of Acalanes history teacher Larry Freeman, this program was designed to accommodate the particular writing needs of the Social Studies department. We work in conjunction with the history teachers and

provide individualized instruction for various writing projects. Tutors meet with their students to review how to improve their essays in a casual and relaxed atmosphere. While attention is given to structure and organization, the emphasis of our analysis is on the strength of their argument.

Overall, the students have responded positively to this very valuable program. Most have come to recognize us as their ally, with the common goal of improving their writing skills. Some even return for help beyond their scheduled times. This program is both a unique and gratifying way to be involved at the high school. It gives us enormous satisfaction to make even a small difference to our students."

Social Studies and Humanities

Culture. History. Literature. Languages.

LASF brings a rich range of learning enhancement in social studies and humanities to students of all ages. From the history of Lafayette to one-on-one writing evaluation and assistance, we strive to enhance current lessons and skills.

Elementary school

LASF responds to teacher-requested units to cover or enhance specific areas of study through innovative programs.

History of Lafayette
Family and Ethnic Heritages
Chinese New Year
Poets in the Schools
Gold Rush
Native American Studies

Middle school

Focused attention on writing in 6th and 7th grades helps students master the basics, and art programs tied to social studies bring lessons alive.

Writing for Mastery
Foreign-language native speakers
Cultural programs

High school

Writing attention continues at the high-school level, along with support for various special programs.

Writing for Mastery
Poets in the Schools
Mock Trial
Model U.N.
Readers for AP classes

The Performing Arts

Music. Drama. Song: Building skills and confidence.

It's rare to find a complete performing arts curriculum in public schools today. From sharing the cost of choral music instruction in the elementary schools to support of instrumental music and drama productions in the higher grades, LASF recognizes the value of performing arts in a well-rounded education.

Elementary school

LASF funding touches elementary students with choral music instruction for all and instrumental aides for 4th and 5th graders in the program.

Choral music instruction
Instrumental music aides
California Symphony in the Schools

Middle school

Continuing support for instrumental music and drama allow interested students to test and develop important skills.

Wildcats On Stage
Drama and music assemblies
Instrumental aides
Jazz workshops
Ear Training afterschool program
Music accompanist
Musicians-in-Residence

High school

At Acalanes, LASF supports drama, instrumental music and choral music through various programs.

Vocal coaches and guest artists
Drama workshops
Music accompanist
Purchase of sheet music
Instrumental music aides
Instrumental music master class

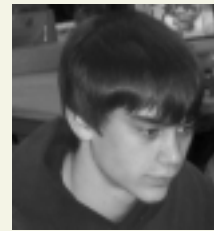


Ryan Sclar
Acalanes freshman

"Beginning in elementary school, LASF has provided me with opportunities that are unique and not provided in most schools. Last year I was especially lucky because of LASF's donations to the Stanley Music Department. They provided me and the rest of the music department not only with equipment but with musicians and teachers.

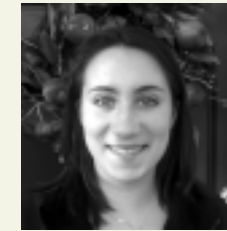
One teacher who was especially helpful for me was Matt Morrish. Matt is a great tenor saxophone player and an equally good instructor. LASF made it possible for Matt to help me and many other students. He even came in two hours before school every Wednesday to coach me and others in a small combo.

LASF also provided me with many opportunities to perform. It seemed like every other week I had the opportunity to play at some type of party or meeting. LASF helped me achieve new levels in my playing, and aided in my winning of the Downbeat Music Competition, a respected international contest. From providing equipment, hiring teachers and sponsoring events, LASF has greatly influenced me."



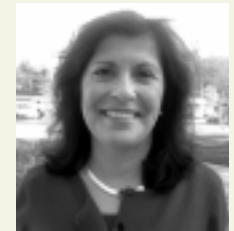
Jordan Rudman
Acalanes junior

"LASF funding has enabled me to take some interesting electives at Acalanes. Video Production and Digital Design are two of the most gratifying and engaging classes I've taken in high school. I have found Environmental Science stimulating and enjoyable because we deal with real-world problems as they occur. I plan to study video/film production in college, and I have LASF to thank for the experience."



Jordan Murphy
Stanley 8th grader

"LASF has allowed me to pursue my interest in drama in four different productions while at I've been at Stanley. I've made friends in all different grades, learned about teamwork and commitment, and, above all, I've gotten the opportunity to perform—which I love!"



Maggie MacIsaac
Director of Curriculum and Instruction,
Lafayette School District

"LASF provides our students with connections to the outside world. The LASF instructors come from a variety of backgrounds. They are talented people who share their passion with our students in the form of well-prepared, exciting lessons that pique student interest. Students in the Lafayette School District look forward to their time with LASF."

Technology and More

Behind the scenes to support learning.

In addition to specific curriculum, LASF supports the technology that allows its instruction to be delivered effectively and efficiently.

Elementary school

Through teacher training and equipment purchases, LASF provides elementary school teachers the tools they need to enhance learning.

Hardware and software for math, language arts, science and social studies

Teacher training to bring technology into the classroom

Middle school

Beyond computers and training, LASF supports specific classes to provide students with unique opportunities.

Video production materials
Computerized woodshop microrouter

Hardware and software
Teacher technology training

High school

LASF supports elective programs through the purchase of supplies, and supports unique programs.

Video production
Youth Educator program
Support of academic clubs and competitions

Fundraising

2003–2004 Budget

Income Sources

Parent gifts	49%
Major gifts*	28%
Matching gifts/ United Way	7%
Business and community gifts	6%
Other**	10%

*Major gifts represent individual contributions over \$1,000, the majority of which come from current parents or parents of students who have benefited from LASF.

**Includes income from scrip sales, annual event, PSAT test preparation and other miscellaneous sources.

Planned Spending

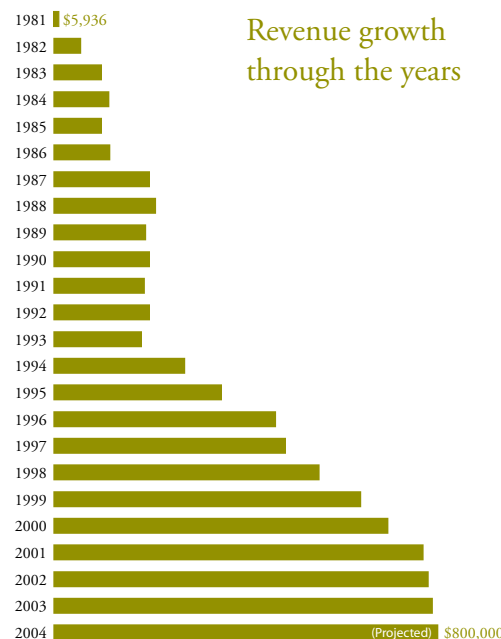
Music and drama	26%
Humanities/ Social Studies	22%
Art	20%
Science and Math	20%
Technology	4%
Fundraising	8%

More than 90% of the money contributed to LASF is spent on programs directly benefiting the students of Lafayette's public schools.

Broad, community-based support.

LASF relies on the generosity of parents, businesses and the community-at-large to allow us to continue to serve our schools and to expand our programs to meet the educational needs of local students.

Over the years, the community has stepped up to demonstrate its commitment to and support of our mission. We are proud to report that more than 75% of total contributions stem from parents of current or former Lafayette students who have seen firsthand LASF's impact on their children.



You can make a difference. Here's how:

- 1 Contribute money.** Donate a lump sum or spread out your gift in up to 10 easy installments. LASF accepts checks, credit cards or electronic funds transfers.
- 2 Take advantage of your employer's matching gift program.** It's a no-cost way to increase your gift's value.
- 3 Give through United Way.** Earmark some or all of your donation for LASF on your donor option card.
- 4 Have your business or employer contribute.** Or consider various opportunities and recognition available as an LASF Business Partner.
- 5 Shop 'til you drop.** Simply by registering your credit cards and grocery affinity cards with eScrip, a portion of your purchases at qualifying stores automatically goes to LASF. And with so many retailers participating, your contributions add up quickly. For a list of participants and to sign up, visit www.escripinc.com (LASF's eScrip account number is 0137956566). Paper scrip is also available for Diablo Foods, Lunardi's, Longs, Macys and McCaulous; call 943-6559 to order. Also, mention *LASF Reads!* when shopping at the [Lafayette Book Store](#) or shop online through the link from lasf.org, and a percentage of your purchase will go to LASF.
- 6 Give stock.** Donate appreciated stocks or securities and take a tax deduction for their full current value, not just what you originally paid, and bypass capital gains taxes!
- 7 Include LASF in your estate planning.** Through a charitable remainder trust or a traditional bequest, you'll leave a legacy for years to come.
- 8 Make a memorial gift to LASF.** Memorialize a friend or loved one with a meaningful and heartfelt contribution.
- 9 Honor a friend or relative.** Recognize a special occasion or a job well done with a contribution. We'll send a card to the honoree acknowledging your thoughtfulness.
- 10 Support LASF special events and fundraisers.** Contribute an item or service to an auction, participate in event planning, or just come to our events and enjoy!

For families with children in Lafayette public schools, the suggested donation is \$400 per child.

If you can give more, please do. If your resources are limited, please be assured that whatever you can give will be greatly appreciated and put to good use.

Our goal is to have full participation—no matter the amount—among families with children who benefit from our programs and support.

To contribute, or for further information:

Contact LASF at 943-6559 or office@lasf.org, or download and print a donation form at www.lasf.org.

LASF Donors

This is the good part:

It's where we gratefully acknowledge those who contributed to our foundation over the past year.

This report acknowledges monetary and in-kind donations received between February 1, 2003, and January 31, 2004.



Marie Whitmore
Happy Valley
Kindergartner

"We cut stuff out with Miss Joy and Miss Dorothy, and we made fish and sheep and we made them look weird. They were teaching us about Eric Carle. He didn't make real pictures, he made funny pictures out of paper because he's a man who's funny. We did that too."

In addition to direct solicitation (as in this mailing, and our follow-up phonathons), LASF raises funds in a variety of ways. Here are a few examples:

Barn Bash: LASF reaped record revenues from our sixth annual Barn Bash, held in September at the Sammann's wonderful barn. Thanks to donors, tireless volunteers and the large, generous crowd, LASF netted more than \$65,000.

Real Estate Partners: Now in its second year, this exclusive partnership with a select group of local real estate professionals continues to benefit LASF through generous contributions tied to local real estate transactions.

Community Partners: We also rely on innovative associations with generous members of our community. Examples include **Ames Seminars**, which for the past 11 years has contributed the proceeds of PSAT preparation seminars to LASF; the **Lafayette Chamber of Commerce's** contribution of a percentage of the proceeds from its annual Art & Wine Festival; **Fastframe of Lafayette**, which provides professional framing for student artwork; **Oakwood Athletic Club**, which supports LASF with both a monetary donation and by providing event space; and the **Lafayette Book Store**, which has pledged a percentage of online and in-store book sales to LASF.

And more: LASF also raises funds through its Corporate Matching Gifts program, United Way, ongoing sales of scrip and eScrip, and grants from philanthropic organizations.

2003/2004 Donors

We apologize for any errors in this list.

Current Parents

Benefactor

(\$10,000 or more)
Norm Schlinger

Highest Honors

(\$5,000-\$9,999)
Anonymous
Ann & Peter Appert
Howard I. Bulos & Linda Tedjakusuma
Joe & Lesa Downes
Tony & Lori Gulisano
Stephanie Harriman
Karen & Tom Mulvaney
The Rudman Family
The Schnugg Family
Jerry & Melody Howe
Weintraub

Distinguished Honors

(\$2,500-\$4,999)
Jon & Betsy Andron
Anonymous
Matthew Bakulich & Sarah Michael
Spencer & Tracy Brog
E. Young & P. Cattaneo
Gary & Jana Cuiper
Beth Devin
Nancy & Steve Falk
Lori & Doug Fowler
Karl & Kathleen Geier
Andrew & Jane Geisse
Mike & Teresa Geringer
Mike Gilson & Cathy Blake
Marc & Marilyn Kaplan
John & Joan Keegan
Margaret Liu/Robert Johnson
Bill & Karen Morison-Knox
Brian & Shelly O'Neill
Sandra Patterson & Stephen Burr
Gregg & Laura Perloff
The Schweibinz Family
Inder & Jaspal Singh
Greg & Jodi Young
Mike & Lynn Zampa

Major Donor

(\$1,000-\$2,499)
Steve & Michelle Agazzi
Bill & Rhonda Andronico
Anonymous (6)
Ken & Joni Avery
Michael & Tammy Borosky
Bowers Family
Kathy & Rick Bowles
Jeff & Christina Brush

Bill & Catherine Bucher
Steve & Laura Butterfield
Julie Cahill & Rick Caine
Mary Cardoza & Douglas Hill
Toni & Timothy Carlton
Peter Chalmers
Ken & Darci Chan
Mark & Anne Cheney
Rand & Susan Chritton
Joe & Cece Cimino
Monica & Chuck Clemons
Brett & Darcy Cole
Shelly & Whiff Collins
Abbey & David Cook
Conrad & Elizabeth Corbett
Michael & Eva Corr
Kevin & Amy Cullen
Mario & Lia DeTomaso
Joe & Debra De Trane
Tony & Sherry DiTirro
Steven & Sheila Ennis
Mr. & Mrs. William Espey
The Ferreira Family
Bill & Janet Fraser
Scott & Phyllis Frazer
Belinda & Mike Gee
Reed Goertler & Lisa Lake-Goertler
The Griggs Family
Mr. & Mrs. Stephen G. Grove
Robert & Sharon Hamann
Mary Hartfield & Tim Johansen
Susan & Steve Hill
Kevin & Eddy Hoffberg
Barry & Donna Homer
Jerry & Dina Honda
Andrew & Caroline Huddart
Todd & Alice Jacobson
Christina Jones Janssen & Howard Janssen
John & Gailyn Johnson
Kastner Family
Steve & Roxy Klein
Marcia & Kenneth Kurtz
Christine & Jim Landry
Jim & Tori Lawrence/
A.B. & J.H. Lawrence
Foundation
Mark & Kathy Lefanowicz
David & Loryn Lindsey
Peter & Louise Linfoot
Larry & Suzanne Margerum
Jon & Melissa Masland
Karla & David Massie
Steve & Janet McClure



Bruce Wodhams
Springhill Principal

"LASF and Springhill have had a relationship that has benefited almost every aspect of curriculum over the years. LASF has also

allowed us to provide funding for pilot projects that have expanded into an integral part of our daily curriculum. Two programs that come to mind are Springhill's Math Specialist Program (funded in its infancy by an LASF grant) and Poets-in-the-Schools (4th grade funding by LASF that has expanded to 3rd and 5th grades through other sources).

Some of our most educational and entertaining annual evenings at Springhill are sponsored by LASF, including the Science Fair, Art and Music Fair and Pi Night (math fair). The daily classroom offerings by LASF instructors are of the highest quality. And the LASF Grant Program has provided Springhill staff members with constant opportunities to improve and expand their own classroom offerings.

Thank you, LASF. Where would Springhill School be without you?"

Tim & Patty McCreery
Larry Miller & Ava Vidal-Miller
David & Julie Mitchell
Robert & Kathleen Mooney
John & Hilary Morland
Steve & Karen Morlock
Marian Mulkey & John Powers
Dale & Pam Murdock
Terry Neben & Philip Simon
Doug & Christy Norton
Robert & Colleen O'Hara
Don & Mary O'Neal
Catherine & Jonathan Ogle
Tom & Sue Olson
Arthur Ong & Ginger Sun
Robert & Shelley Packer
Albert & Pam King Palitz
The Paolini Family
Fred & Sandra Pazos
Matt & Leslie Pease
Brooks & Rose Pedder
Pester Family
Susan Cooper Philpot
Jonathan & Caryn Pierce
Dick & Merrilee Plesha
Zena Potash & Cyrus Mancherjje
Walter & Virginia Price
Randy & Jeanne Rich
William Ridings & Marilyn Margiotti
Melody & Bill Risch
George & Kristin Roeth

Alex Schmid & Tina Hogan
Joan Seet & Francis Carrington
Steven & Lisa Sharaftian
Rick & Lisa Shepherd
John & Jennifer Spahr
David St. Pierre
JoAnn & Ken Stevens
Chapman A. Stranahan & Gail D. Rivard
David Stromberg & Liz Swerling
Dan & Stephenie Teichman
Bill Uhlman & Rachel Westlake
Mark & Cathy VandenBerghe
John & Patricia Visbal
Bill & Jill Wallace
Lynne & Carl Walter
Fred & Deborah Warren
Alison & Bob Wash
Paul & Alicia Weber
Dan Weiner & Lynn Gitomer
Jim & Mia Weller
Richard Whitmore & Jacinta Pister
Ellen & Craig Whittom
Greg Wikler & Deb Teller
Kurt & Jennifer Wilson
Dana & Ken Yzardiaga
Garick & Daryl Zillgitt
Michael Zischke

Honor Roll

(\$600-\$999)
Maria Adair
Mike Ahr Mortgage Broker
Dan & Lisa Albert
Bret & Pam Alsterlind

Current Parents

Honor Roll

continued

Anonymous (8)
 Felix & Pat Aragon
 James & Sharon Bach
 William & Mary Baird
 Dan & Laurie Baker
 Dan & Leslee Baldwin
 Chris & Charlene Banard
 Pais & Phil Barton
 Emily Beatty & Thomas Guyette
 Carol & Dave Berlier
 Davis Berry & Elizabeth Jameson
 Cathy & Matt Bertics
 Karen & Larry Blodgett
 Stephanie & Doug Bontemps
 Paul Borden & Mary Chandler
 Karen Brockwell
 Mr. & Mrs. Peter Buck
 Eugene & Jo Anne Burbige
 Jackie Carson & Alan Cox
 Steve & Dana Chase
 Philip Chernin & Christine Voll Chernin
 Henry & Katherine Chesbrough
 Gary & Heidi Chew
 Jim & Natalie Clancy
 Susan & Peter Colby
 Joyce & Ernest Coleman
 John & Elizabeth Conely
 Lisa & Tom Connolly
 Beverlee Cox
 Jim & Linda Curtis
 Kelly & Doug Dalziel
 Chris & Amy Damianakes
 Brad DeLong & Ann Marie Marciarille
 Gurinder & Aman Dhillon
 Tim & Elena Dietrich
 Maureen & Dennis Dougherty
 Dowley Family
 Victor & Anastacia Drabkin
 Steve & Wendy Dunn
 Rick & Lucy Eggerth

William & Deborah Elder
 Donna Eldridge/Bob Cleaver
 Steven & Debbie Elefant
 Craig & Linda Epperson
 Mark & Carol Escajeda
 Carl Espe & Julie Jones
 Peter & Debbie Eva
 Tom & Carol Evans
 Whit & Keely Everett
 Jon & Dana Ewing
 Robert Ewing & Koreen Kelleher
 Ferrif Family
 Bonnie & Andrew Field
 Dena & Dan Fishbein
 Tanya & Mark Forbes
 Michael & DuBose Forrest
 Cathi & John Frangoulis
 Joseph & Inverleith Fruci
 Susan & Mike Furay
 Ernie Furtado & Barbara Pelletreau
 Debbie Gajer & Jim McTarnaghan
 Courtney & Ted Gallagher
 Ray & Ingrid Gardner
 Jeff & Linda Gidre
 Jeffrey Gilman & Carol Reif
 Dan & Lynn Girvan
 Jeff & Geri Given
 David Gold & Wendy Herzog
 Shelley & Robert Golomb
 Bob & Patty Gonsler
 Ross & Amy Goodheart
 Margot Green
 Nathan Haese & Susan Wollowitz
 Carole & Jay Hagglund
 Kathleen & Matt Haley
 Charlie & Suzy Hansen
 Rich & Debbie Harris
 Beth Dalton & Brian Henning
 Michael & Stephanie Henrikson
 Pat Hershey & Joe Darrell
 John & Lisa Hild
 Wes & Julie Hilton
 Hoffschneider Family

Bill & Terry Hogland
 Brett & Charlotte Holden
 Hunter & Anne Holding
 Michael T. & Lisa Holmes
 James & Kelly Hood
 Jeff & Karen Horn
 Rick Horn & Karen Moghtader
 Marilyn & Greg Hughes
 Eric & Erin Hull
 Deborah & Sal Italiano
 Neal & Alison Jacobi
 Gary & Lori Jandegian
 Elizabeth Johnson & Ben Strumwasser
 Ian & Staci Johnston
 Jeff & Ellie Kann
 Don Keeble & Karen Peterson
 Rosemary & Lee Kirbach
 Chris & Jon Knox
 Doug & Marti Kohen
 Anu & Erik Kuefner
 Dr. John & Deborah Kwan
 Ronald & Nicolien Lamb
 The Lambert Family
 LaRoche Family
 Lyn Lazar & Truman Burns
 Bill Leatham
 Barbara & Paul Lefcourt
 John & Gwenn Lennox
 Brian & Renee Lewis
 Michael & Winnie Lohman
 Erik & Angie Lundgren
 Laura & Robert Lyman
 Harry & Dayna MacDannald
 David & Jane MacKenzie
 Sandy & Pam MacLeod
 Chris & Sheila Maher
 Terry & Kristina Maiken
 Kathy & Dick Marshall
 Tim & Carmen Martini
 Greg & Mary Ann Mason
 Patrick & Colleen McCarty
 Keith & Kim McConnell
 Meg & Al McNiece
 Barry & Karla McQuain
 Norbert & Victoria Megowan
 Oren & Jacquie Michels
 Dan & Fran Miller
 Lorraine & Don Miller
 Paul & Colleen Monasevitch
 Jeff & Dorothy Moore
 Rich & Ronda Moreno
 Brendan & Christina Morley
 Doug & Karen Morris
 Robert & Denise Murphy
 Bill & Linda Mutch
 Laura & Mark Nathan
 The Neale Family
 Don Nimura & Mary McConnell
 Bill & Susan Nork
 Michael & Elizabeth Olson
 Eric & Amy Peterson
 Bettye Phifer Ames & Sanford Ames, Jr.
 Norman Plotkin & Doris Omi
 Carmen & Caesar Perales
 Steve & Ellen Poling
 Chuck & Michele Poloka
 Konrad Rautenberg & Cheryl Noriye
 Paul & Heather Records

Don & Judith Reid
 Tim & Cindy Reidy
 Kevin & Traci Reilly
 Jim & Ginni Reynolds
 Neal & Stephanie Ringquist
 Mike & Kelli Robertson
 Carol & Larry Rockwell
 Johnni & Greg Ross
 Martha & John Ross
 Bill & Liz Roth
 Walter & Stephanie Rundin
 Andy Sclar & Rebecca Thompson
 Carl Shapiro
 Stephen & Faith Silvani
 Steve & Elizabeth Sloat
 Seldy & Chuck Speers
 Carol & Michael Spiering
 Heather & Keith Stanford
 Don & Elizabeth Stanners
 Richard & Ruth Stanton
 Hank & Kim Stern
 Tom & Virginia Steuber
 Harry & Kim Stewart
 Chris & Lisa Strausser
 Anthony Constantouros & Rebecca Lamoreaux
 Paul Covey & Ardice Harry
 Steve & Gail Cutter
 Georgia Jill Dair
 Nikos & Elenie Daphnis
 Ellen & Greg Davis
 Anthony & Marianne Deichler
 Ann & David DeLuca
 Lourdes & Glen DeMattos
 Bob & Sarah Devany
 John & Sally Devor
 Charles & Susan Dible
 David Dickson & Marla Wong
 Kevin & Julie Diede
 Jeffrey & Melinda Dieden
 Diemer Family
 John & Kristina Dillon
 Mary Alice Dinerman
 Peter Dinerman
 Leslie Dumas
 Katy & Bill Dunmire
 Valerie & John Durantini
 Gay & Louis Edelson
 Reid & Phyllis Edwards
 Bill & Renee Egan
 Tina & Eric Eisenman
 Scott & Donna Elliott
 John & Alex Engs
 Mark & Debbie Everton
 Roger & Patricia Falcone
 Don & Theresa Falk
 David & Judy Fassler
 Jon & Linda Flower
 Sharon & Tom Francis
 Sandy Frucht/Gary Sherne
 Frydman Family
 Carin Fujisaki & Pablo Haz
 Laura & Adam Gambel
 Jim Garrett & Maria Rivera
 Doug & Fran Gary
 Philip Girard & Maria Cefalu
 Karyn Goldberg-Boltz & Michael Boltz
 Susan & Peter Goldie
 Kevin & Dora Goto
 Dennis & Ann Govan
 Cliff Bernstein & Sally Kaye

George & Ann Bishop
 Heidi & Howard Bishop
 Ninette & Robin Bittner
 Kyle & Kelli Blocker
 Michael & Erin Bloom
 Jon & Dancille Boone
 Mark & Kathy Bressler
 Miriam & John Brondello
 Dr. & Mrs. John Bruns
 Steven Buller & Laurie Lee
 Trapper Byrne & Judy Wong
 Chris & Erin Caldwell
 Mark & Sandra Cameron
 Scott Cameron & Teresa Dix
 Debra & Mike Carey
 Bill & Vicki Cassidy
 Thomas Chastain/Renee Chow
 Brian & Karen Chuck
 Bruce & Linda Cochran
 Lisa & Richard Cohen
 Pascale & Mark Cohen
 Tom & Lisa Collins
 Jim & Marissa Comins
 Karen & Gary Conrad
 Anthony Constantouros & Rebecca Lamoreaux
 Paul Covey & Ardice Harry
 Steve & Gail Cutter
 Georgia Jill Dair
 Nikos & Elenie Daphnis
 Ellen & Greg Davis
 Anthony & Marianne Deichler
 Ann & David DeLuca
 Lourdes & Glen DeMattos
 Bob & Sarah Devany
 John & Sally Devor
 Charles & Susan Dible
 David Dickson & Marla Wong
 Kevin & Julie Diede
 Jeffrey & Melinda Dieden
 Diemer Family
 John & Kristina Dillon
 Mary Alice Dinerman
 Peter Dinerman
 Leslie Dumas
 Katy & Bill Dunmire
 Valerie & John Durantini
 Gay & Louis Edelson
 Reid & Phyllis Edwards
 Bill & Renee Egan
 Tina & Eric Eisenman
 Scott & Donna Elliott
 John & Alex Engs
 Mark & Debbie Everton
 Roger & Patricia Falcone
 Don & Theresa Falk
 David & Judy Fassler
 Jon & Linda Flower
 Sharon & Tom Francis
 Sandy Frucht/Gary Sherne
 Frydman Family
 Carin Fujisaki & Pablo Haz
 Laura & Adam Gambel
 Jim Garrett & Maria Rivera
 Doug & Fran Gary
 Philip Girard & Maria Cefalu
 Karyn Goldberg-Boltz & Michael Boltz
 Susan & Peter Goldie
 Kevin & Dora Goto
 Dennis & Ann Govan
 Susan & David Graves

Steven & Kim Greer
 Joe & Bonny Griebstein
 Matt & Melinda Guelfi
 Gyulai Family
 Ed & Kris Haggerty
 Dulce & Jeff Hahn
 John & Mary Hall
 Sharlene Hanaway & Brett Beaver
 Walter & Melanie Hardin
 Dan Harrington & Michele Nino
 Caroline & David Harris
 Roseanna Harris
 Mary Ann Hasbrook & Jim Claytor
 Mr. & Mrs. Jeff Higginbotham
 Hopkins & McGuire Household
 Jason & Abby Howard
 Marcia & Brad Howard
 Michael & Nancy Hughes
 Jon & Kathleen Ianziti
 Lorraine & Glen Illing
 Rudy & Mary Jacuzzi
 Jeffries Family
 Art Kapoor/Judy Haxo-Kapoor
 Nestor & Lilian Karas
 Mike & Mary Katz
 Alan & Susan Kaufman
 Ken & Kristin Kisner
 Steve & Karen Kostka
 Kuzman-Batchelor Family
 Eric & Jane Ladrech
 Kiet & Evelyn Lam
 Marilyn Lopicola
 Daniel & Juleen Lapporte
 Carol & Gil Lawton
 Linda & Richard Leahy
 Barry & Sherie Lee
 John & Pam Lwerenz
 Bruce & Cindy Lincoln
 Robert & Karen Lindsay
 Maureen & Nicole Loftis
 Bill & Lisa Loudon
 Jay & Eileen Love
 Nina & Christiana Maarse
 Bonnie MacBride/Ray Barber
 Robert & Joan Maderious
 Joyce & Donal Mallonee
 Jeff & Jackie Mann
 Robert & Shoshana Mark
 Bill & Martha Marquand
 Chris & Tina Martin
 Frank & Lorraine Massimillo
 Sumon Mazumdar & Seema Malhotra-Mazumdar
 Lori & Dan McAdams
 Hal & Dianne McArthur
 Chris & Casey McCann
 Sean & Gioia McCarthy
 John & Colleen McCormick
 Skip & Linda McCowan
 Bruce & Andrea McDiarmid
 Mike & Andrea McGoldrick
 Regina M. McGrath
 Christopher & Barbara McLain
 Terri & Dave Melnick
 Dennis & Ann Merideth
 Merritt-Smith Family
 Mary Michaels

Robert Miller/Paula Shadle
 Mark & Anne Mitchell
 Art & Anne Mitsutome
 Mark & Maryann Mittelman
 Seth & Donna Moldoff
 Sean & Lori Moran
 Dick Morisky & Cathy Welles Morisky
 Paul & Lisanne Mueller
 Doug Murphy
 Pete & Lori Musser
 Bill & Sharon Nagle
 Dan & Mary Nakahara
 Duane Nelsen & Peggy Matson
 Dale & Debbie Newcomb
 Mary & Scott Newman
 Henry & Cindy Nigro
 M. Jane Nishio & Ron Wasserman
 Mark & Maureen Nuti
 Mike & Jill O'Brien
 Tim & Denise O'Keefe
 Gail M. Odom
 David & Juan Chen Olsen
 The Olufson Family
 Panero Family
 Mark & Elizabeth Parry
 John Patty & Beth Roosa
 Virginia & Royce Paulsen
 Gary & Geneva Peare
 Larry & Randi Pines
 Trudy & Bruce Presser
 Carol & Steve Pulford
 David Rabbino & Elizabeth Domagalski
 Michael & Laura Reiling
 Mike & Terri Reitz
 David & Dianne Rey
 Steve & Sharon Richard
 Julia & Charles Rock
 Ed & Renee Rogers
 Don & Jenny Rose
 Jeffrey & Lesah Ross
 Mark Rudy & Victoria Cochran
 Roger & Sharon Rueff
 Andrew & Erin Sabey
 Angela & Kevin Salquist
 Richard & Lisa Sanchez
 Stephen & Lesley Sanders
 Susan & David Sanders
 Rick & Casey Sasner
 Bill & Alissa Scanlin
 Gabriella Schlesinger-James
 Dave & Patti Schreiner
 Stephen Schrey & Michelle Raymond-Schrey
 Ellen & Steve Seiler
 Michelle Self
 Pam Seroy
 Cynthia Shambaugh & Hisayuki Ishimatsu
 Gary & Nan Shaw
 Timothy & Angela Shea
 Janet & Alek Shestokov
 Paul & Miekko Shimotake
 Chris & Nancy Shulenberg
 Peter & Laura Shumaker
 Simonsen Family
 The Sivesind Family



Kylie Vinther
Lafayette 1st grader

"I like doing LASF painting art!"

Alida Smit & Stephen White
 Dan & Sandy Smith
 Linda & Kris Sorensen
 Jonathan & Joan Spiegel
 Bob & Susan Stabler
 Shannon Stanley & Michael Plafker
 Keith & Lisa Stone
 Tim & Ingrid Sullivan
 Terry & Ron Sutter
 Lori & George Swift
 Helen Tang & Joseph Chan
 Stephen & Jane Tanner
 Larry & Esther Thal
 Karen & Madan Thapa
 Gottfried & Janet Tittiger
 Charles Tonna & Carolyn Lee
 Elena & Chris Toohey
 Audrey & Tom Torney
 Carolyn Usinger
 Dan & Vickie Vradenburg
 Patricia Walker & Richard Rudin
 Fong & Carolyn Wan
 Kim & John Webb
 Webster & da Silva Family
 Paul & Katherine Welcomer
 Wenger Miller Family
 Rusty & Julia Weston
 Mark & Janet Williamson
 Bob & Lise Wilson
 Tim & Lynne Wilson
 David & Mary Winn
 Michael Wood
 Ned & Kelly Wood
 Steve & Sheila Woodruff
 Steven & Laura Wright
 Vijay & Asha Yabannavar
 Joel & Heidi Yodowitz
 Neil Zelin, Carol Murota
 Yiqing Zhou & Qingyu Wu
 Carol Lu Zischke

Donor

(Up to \$300)
 Cynthia & Yvette Aarons
 John & Tessie Aczon
 Jeff, Teri, Alicia & Ashley Adams
 Krishnarao Addagiri
 Ms. Joellen Ademski
 Anela Ahmed
 Fumiyo & Maqsood Ahmed
 Brian & Jennifer Aiello



Gail Wherritt
LASF Social Studies
Instructor

"LASF means bringing exciting and meaningful lessons to the classroom. Meeting

real pioneers like Jenny Wimmer, Mifflin Gibbs, Henry Chan, Robert Vance or Sallie Hester makes the people of the Gold Rush come alive for Lafayette 4th graders. Should they risk their nuggets gambling at the Gold Strike Saloon? It is an exciting day of gold fever, and I know the students leave with a better understanding of the Gold Rush."

Current Parents

Donor

continued

Katherine & Richard Alexander
Steve & Linda Allen
Denise & Michael Altaffer
Leslie Alva
John Anderson
Mary Anderson &
Grant Petersen
Monica & David Anderson
Rick & Kate Anderson
Scott & Pam Anderson
Brandt & Pat Andersson
Andrade Family
Anonymous (97)
The Applin family
Bill & Ann Armstrong
The Peter Armstrong Family
Klaus & Karen Aschenwald
Ahmad & Sima Asghary
Dana Askay
Mehdi Assadian
Jeanne & Dave Atwood
James & Trina Audley
Jon Bacon & Anne Randolph
Richard & Cecily Bailey
Jim & Jeanette Baird
Tom & Vickie Balestrieri
Mark & Brenda Balfrey
Barry & Irasema Bamford
Nasser Barabi &
Rose Dastmalchi
John & Vicki Barakos
Kathy & Ron Barber
David & Kathy Barleen
Michael & Britt Barnes
Michael & Suzanne Barnett
Sherman & Sarah Bartley
John Basos & Virginia Saue
Drew & Becky Bassak
Chris Baysdorfer &
Tena Kaplan
Greg Beattie &
Victoria A. Crebbin
Geoffrey & Wendy Beaty
Larry & Anna Beck
Tom & Cookie Bedford
Gary & Roseann Beeman
Mr. & Mrs. Christian Behrendt



Matthew Marquis
Lafayette 4th grader

"Actually, it would be impossible to say what I like best about LASF, because I love everything about it!"

Larry & Nancy Beliveau
Richard L. Bellagamba
Nancy Benn
Pat & Bob Bennett
Anne Bentley & J. Shugrue
Robert & Lee Berg
Glenn & Sylvia Berkheimer
Ray & Vicki Bertrand
Danny & Maureen Bettis
Andrew & Laura Betts
Mabel & Aruna Bhat
Venkat & Vidya Bhat
Peter Binstock & Diane Procter
Lewis & Linda Bird III
Leilani Birley &
Edward Sussenguth
Dan & Judy Birnbaum
Michael & Emma Bishopp
Chip & Beth Bissell
Alan & Victoria Bjerke
Blanche Blachman &
Adrianne Forshay
Steve & Candice Blackman
Jane Blake
Jeff Blee & Susan Gouveia
Paula Blizzard & David Brown
Chris & Tej Bloom
Steven & Sarah Blumenfeld
Steven & Kerry Bolen
Anne & Jon Bone
Gary & Sherill Borg
Cheryl & Dave Bowlan
Kathryn & Ken Bozzini
Scott & Angie Braun
Marc & Johanna Brenner
Glenn & Ellen Breslin
Dawn & Peter Brightbill
Juan Briones & Nancy Marquez
Matt & Tracy Broback
Dan & Teresa Brown
Robert & Angie Brown
Elise Brownell & Peter Seperack
Norm & Jennifer Brudigam
Ginny & Rick Bruzzone
Buckley Family
Charles & Susan Bullard
Rob & Susie Bunting
Randy & Mimi Bupp
Frank & Colleen Burns
Michelle & Marc Burnstein
Ron & Jessica Bush
William & Mindy Bush
Kirstine & Scott Butler
Michey & Beth Caldwell
Jim Cameron
Lisa Cameron
Anthony & Sook Camilleri
Mike & Marguerite Campione
Ken & Diane Camporeale
Michael & Mary Caprio
Carrillo Family
Grant & Lori Carson
Dave & Amanda Casey
Raymond & Linda Cassell
Michael & Susan Cattali
Jack & Angie Catton
Denise & Fred Cebalo
Robert & Sophia Cervero
Betty Chan
Michelle & Bill Chan
Rick Chan & Jill Shibuya
Albert & Terry Chaparro

Chi & Phoebe Chen
Hong Chen & Yunjie Ma
Mark & Karen Chen
Marc & Lynne Childers
Young Ho Cho &
Taesook Cho
Yuo-Ling Chou/ Ma-Chen Tu
Chow-Danel Family
Wymond & Terry Choy
Keith & Cindy Chrestionson
Wayne & Helen Christian
Tom & Lisa Christophe
Daryl & Julie Chrzan
Mr. & Mrs. Eric Chung
Kenton Chung &
Kammie Wong
Paul & Jane Chung
Michael & Ilene Clancy
Karen Clark
Kelly Cobeen & Chris Thewalt
Ken & Stephanie Coffee
Alan & Irene Coleman
Marianne & Joe Coleman
Mike & Leanne Colvin
Chris & Dana Connolly
Craig & Elly Conrad
Norm & Wendy Constantine
Micheal & Teri Cooper
Marian & Jim Cope
Keith & Linda Copenhagen
Patrick & Lauren Corcoran
Clyde & Nancy Cornell
Gerald & Kim Cosenza
Terry & Donna Costello
Carl & Pat Doughty
Laura & John Cox
Lisa & Tom Croen
Mike & Nelle Cronen
Eleanor & Edward Croze
Sharon & Jeffrey Culver
Jim & Tamara Cushing
Daniel & Cathleen D'Almeida
Anthony & Julie D'Amante
Tina DadaFarin
Dan & Jo Dahlhauser
The Danto Family
Rick & Trish Davenport
Mr. & Mrs. Tom Davenport
Paul & Jane Davey
Caryn & Marc David
Jean & Phillip David
Beverly Davis
Jan & Tracy Davis
Mike & Jenny Davis
Johanne De Beaumont Nelson
Kenneth & Daina Debeaune
Steve & Marie De Benedetti
Leslie de Boer &
Ron Wichmann
Daniel & Franca Del Ponte
Eric & Sharneth Del Sesto
The Demos Family
Daniel & Anne Dench
Doreen & Tom deRoque
Gloria & Fabio Dias
Jay & Cate Didion
Steve & Sue Dietze
John & Catherine DiMiceli
Craig & Lauchlin Divine
David & Gail Doering
C. J. & Suzanne Doherty
The Donderos

John Douglas
Paul & Terri Dubrasich
The Duckworth Family
Bob & Allison Eagle
Jane & Bob Ebe
David & Bushra Eckstein
Don & Karen Eisenberg
Clifford & Mary Eisner
Vicki Elliot & David Levine
Colin & Karen Elliott
Diane & Tom Elliott
The Emerson Family
Joyce & Don Emmons
Glen & Terry Enns
Derya & Annette Erce
Lori & Dennis Erokan
Abeezee & Durriya Essabhoy
Michael & Mary Jo Eustis
Paul & Ann Evans
Ron & Susan Evans
Ruth Ann Evans
Karen & Joe Faber
Jon Fach
Janice & Antone Fahden
Greg & Mindy Fahmie
Amy Faltz & Tony Crea
John & Melody Fan
Hooshang & Jinous Fard
Paul & Rosalind Faries
David & Ilma Faulkner
Rick & Jan Favro
Karen & Todd Fearon
John & Meg Fellner
Robert & Paola Fellows
Karen & Rick Fenchel
Kim & Mark Figone
Vladimir & Maria Filonov
Michael & Sandra Fink
Bob & Jean Finney
Michael & Sandra Fischman
Tom & Carol Fishel
Kathleen Fisher
The Fivey Family
Rae & Craig Fixler
Chris & Susan Floethe
Kim & Jay Flom
Mark & Julia Flower
Judith, Patrick & Allison Flynn
Roy & Grace Fong
Eric & Sally Fonstein
Andy & Marianna Ford
Ron & Peggy Forest
Carol & Philip Fortuna
Richard & Ana Fox
Bob & Syrene Francis
John K. Frazier
April French
Paulette & Clay Fry
Susan Gabriel
Phil & Laura Gaffney
Ruben & Ann Galindo
Richard Galle &
Susan Celniker
Yaron & Rakefer Ganot
Joe & Elizabeth Garrity
Steve & Belinda Gatti
Steve Gause
Mike & Sandra Geer
Neli & Fred Geonetta
Sam & Victoria Ghulam
Nick Gianakos & Lee Storey
Gwynne Gilson



Judy Zenoni
Burton Valley
Teacher

"I have had the pleasure of working with LASF in several capacities: as a board member, a classroom teacher and a parent. LASF provides enrichment in the classroom that cannot be duplicated. The art and science instructors are marvelous, delivering high-quality instruction and curriculum to my 4th grade students. LASF is truly a great partner in education and what makes Lafayette a great place to teach."

Nigel Godwin &
Kimmen Sjolander
Sandy & Robert Goldberg
Janet & Gary Goldman
Jeffrey & Christina
Goodfriend
Janene & Bret Goodman
Nancy Goodmiller
Kara & Gary Gragg
Anne & Reigh Granlund
David & Michele Grant
Cheri Gray
The Gray Family
David Green &
Carolyn Manson
John Green
Margaret Grover-Roos
& Filip Roos
Michael Grubman &
Julia Patterson
Burnett & Kristin Gunter
Joel & Shelly Gust
Melinda & Walter Hall
Gary & Dana Hamaker
Kyle & Gina Hansen
Harding-Brown Family
Kirk & Cristina Harman
Randy & Carol Harris
Elaine & John Hasbrook
Janet Y. Hashimoto
Healey Family
Jeffrey Heaton
Roger Huddlestone
Paul & Diana Helfrich
John & Kathy Hemmenway
Jon & Michele Henderson
Jean Hetherington
Candace & Michael Hirsch
Vince & Michele Hooser
Deborah & Norman Hoffman
Charles Holz
Elizabeth Hoover
Bill & Cathy Hopper
Richard Horuk &
Deborah Baly
Robert & Jody Howe
Beverly & James Huey
Ken & Joanne Hughes
Mr. & Mrs. Hui
Terri & Rick Humann

Greg & Debbie Hunter
Austin & Diane Hurst
John & Kate Hutchison
Scott Ingram & Kristin Dakis
Karen & Gary Isham
Satoshi Iwahashi
Martin & Roxanna Jackman
Stacy & Gilbert Jackson
Garth & Marcia Jacober
Jill Jaffe & Greg Greer
Teri James-Cusack &
Mark F. Cusack
Johnny Jang & Meadine Mah
Youngsup & Heesook Jee
Linda & Brian Jeffery
Jack & Marilyn Jenkins-Stark
Leslie Jensen
Cynthia & Randy Johnson
Ed & Terri Johnson
Nels & Randi Johnson
Storrie & Robert Johnson
Dave & Michele Jolly
Stephen & Theresa Joyce
Wan Soo Jun & Sue Sook
Craig & Renee Juster
Kathy Kami
Joseph & Eva Kant
Eugene & Irena Kaplan
Robert & Laura Kastigar
Laura Kaufman
Mark & Karin Kauzer
Michael & Theresa Kaviani
Susan Keeley
Stephen & Stephanie Keire
Mark & Kyoko Kellogg
Tom & Kathy Kellogg
Austin Kelly &
Karen Griffin-Kelly
Sherry & Jon Kennedy
Christopher &
Rebecca Kenney
Khanh Keomance
Murray & Cynthia Towle
Kephart
Irina Khidekel
Henry & Renee Kim
Jeanine & Jonathan Kim
Alan & Maggie King
Fred & Sandy King
Thomas & Margaret Kintner

Robert & Celine Kirchman
Brad & Jeanne Kisner
Louanne Klein &
Dave Radosevich
Richard & Kathleen Klein
David & Miriam Kleinerman
Jenni & Jeff Klueger
Daniel & Lisa Kluzik
Nancy & Greg Kobs
Garrett:Emily Koehn
Ron & Becky Kolb
Dorata/Robert Kostecki
Carolyn Kreuzer
John & Fran Krieger-Lowitz
Jose & Patricia Kuan
Adam Kudlicki
Lyle & Randy Kunes
Robert & Sharon Kurek
Deena & Buddy Kurz
Galina & Sam Kvitko
Violet & Wei Tai Kwok
Kim & Garrett Kyle
Diana Lacke
Wendy Lacy
Jane & Steve Lahey
Keith & Linda La Honta
Carol Lahvic
Marty & Astrida Lalor
Genevieve F. Lam
Lena & David Lamel
Michael & Lori Langley
Sharon & Peter Langtry
Johnnie & Evonne Lau
Stephen & Kerry Lauth
Charles & Sandi Lawson
JoAnne & Steve Layschock
Calvin & Noreen Lee
David & Joyce Lee
Franklin Lee
Rik & Liz Lee
Young & So Young Lee
Terry & Lori Legler
Saul & Elva Lemus
Peter & Lynn Lenci
Patrick & Barbel Lenz
Barry & Michelle Leskin
Carol Levin & Michael Brady
Igal & Meri Levy
Manjari & Michael Lewis
James & Brenda Ley
Jessica Lim
Lo-Hung &
Hung-Chiao Lai Lin
Tse-Si & Mei-Ling Cheng Lin
Michael & Deena Lipsett
Patrizia Longo
Diane Lorence
Efrain & Shira Lubliner
Margaret & Robert Lucy
Derrick & Louise Lue
Julie Lunsford
Dan & Karen Lynch
Philip Y. Ma
Robert & Michelle MacDonald
Dave MacLean
John & Cindy Maddux
Tim & Beverly Maechling
Maggio Family
Todd & Catherine Maiden
Jeffrey Maier, MD
Warren Makinson &
Martha Cervantes

Joe Malley
David & Vanessa Mancebo
Lorn & Margo Marcellini
Jeffrey Marchesani
Mike Marion & Melissa Hom
Jim & Carol Marquis
The Marsden Family
Gregory Marshall &
Merula Franzgrote
George & Viviana Masarweh
Frank & Ann Masi
William & Carol Mathews
Jani & Ati Roger Matsui
Dave & Sherry Mattern
Pete & Sari Matthew
Sonja Maund
Andy & Lisa Mayeda
Joy & George Maze
John & Nell McBeth
Ken & Karla McCormick
William & Anne McCormick
Scott & Paula McDonald
Susan & Brendan McEntee
Jane & Pat McGlynn
Tim McKinley &
Karen McDowell
Jay, Sue, Megan &
Mark McMillan
Scott & Becky McVittie
Patrick & Liz Meehan
Carlos & Ana Mendez
Michael & Michelle Merrick
Kathy & Rick Meyer
Ted & Maria Michon
Jim & Maureen Miller
Keith & Vickie Miller
Karl & Kristen Mills
Steve & Lesley Mitchell
Michael & Juliet Montagnon
Jeff & Linda Mooers
Guy & Kathy Moore
Rod & Maria Mord
Michael Moskowit
Ms. Elizabeth Moulton
Norma Moyer
Coleman & Elaine Munch
Bryan & Gladys Murphy
Eamon & Wendy Murphy
Patrick & Sarah Murray
Jennifer & Lenny Nadeau
Hassan & Sima Najafi
Neidermeiers
Bruce & Noelle Neighbor
Alan & Luisa Nelson
Glenn & Shelley Nelson
Fern Nemenyi
Tom & Cassandra Nevins
Lennette Newell & Bill Swank
Stephen & Shirley Ng
Murray Nicolson &
Carson Ahlquist
Alaen & Tina Ninh
Mr. & Mrs. Kevin Nitsos
Carole Noel
Timothy & Holly Nolan
Tom & Pat Nolan
Thomas & Gail Nugent
Dan & Mary Ann O'Malley
Robert & Sophia O'Reilly
John & Molly Ogro
Cliff & Bonnie Okamoto

Current Parents

Donor continued

Donald Oppenheim & Simone Alexander
Roger & Lisa Ota
Mike & Mary Ousley
Melissa Owens & Paul McWhirter
Dana & Lani Owyong
Rick & Rose Padilla
Bobby & Mary Padua
Andrew & Cindy Palffy
Ken & Teddy Palmer
Jeff & Christine Palmquist
Saum & Diana Partovi
Matthew & Kathryn Patterson
Roger & Melinda Pedersen
Gerard E. Van Pell
Georges & Virginia Pelpel
Al & Alice Perez
Trond Perersen & Mary Visher
Robert & Ginetta Petri
Betty Phillips
Ken Philpot
Stephanie Picetti
The Pittore Family
Pierce & Tracy Plam
Fran & Patricia Plante
Lea & Bryan Plummer
Michael & Michelle Poole
David Porter & Lila Abdul-Rahim
David Portnoff & Vivienne Hing
Alice & Adam Rogot Pressman
Evan Price
Maurice & Aimee Protzen
Chris & Sandy Quiett
Dr. Margaret S. Race
Thomas & Tamarra Raeth
Keith & Mary Ragsdale
David Rakip & Suzanne Boldt
Marciano & Miriam Ramirez
Dave & Bonnie Ramm
Ed Ranahan
Kelli & Michael Rantz

Cindy & Randall Rasicot
Kris & Helen Rasmusen
Jack & Sandy Ravazza
Susan Ray
Susan Raynes
Chris & Ann Reed
Mr. & Mrs. Harry Reed
Reich-Lopez Family
Mr. & Mrs. James Reid
Gale & Phil Remotto
Randy & Jody Repstad
Ellen & Bill Resneck
Robert Reuter
The Reynolds Family
Marilyn Richison
David & Cheri Ridge
Terence & Iris Ring
L. & N. Rittenhouse
Muji & Zeba Rizvi
Kathy Robb
Cynthia & Gerry Robey
Geoffrey Robinson & Verna Haas
Scott Robinson & Deborah Dobin
Greg Rodolari & Tamra Brown
Gil & Susan Rodriguez
Peter & Carol Rodriguez
Mark & Nancy Rogers
Tia & Keith Rogers
Sandra Romaidis
Margaret Romero
Liz & David Rosenberg
Jeff & Linda Rosenthal
Michael Rossi & Elizabeth Engh
Blake & Laurie Rothfuss
Jim & Darlene Rourke
Steve & Amy Ruegg
Mahmood & Mojdeh Sadeghinejad
Mitra Salmassi
Jill & Andrew Salmon
Mary Salmon
The Samanigo Family
David & Nancy Sanders
Paula & Robert Sanders

Emilia Sandoval Bauleke & Domingo Delgadillo
Saribalis Family
The Sato Family
Paul & Dena Sauer
Jason & Cynthia Schaffer
Susan Schapiro & Charley Kopp
Laura & Bill Scharff
Leo & Chris Schiavello
Howard & Susan Schneider
Mrs. Edward Schoenbart
Nelly & Steve Schrage
Julie & Mark Schroeder
Steve & Jerri Schwartz
Schwertscharf Family
Paul & Mary Scipi
Michael & Nancy Scribner
Jennifer & Steve Searle
Michael & Cathy Sereno
Ken & Barbara Serwin
Susan Sevall & Chris Hansen
Anil & Rajshree Sharma
James & Anne Shaw
Dennis & Denise Sheehan
Hilary & Bob Shipway
Mike & Heather Showwell
Akiko Shurtleff
Shirley Siegel & Walter Kieser
William & Deborah Simmons
Sabrina Simpson
Stuart Sims & Chris Kline
Nicole Singh
Larry & Mary Sklarski
Richard & Kathy Smith
Steven Smith-Susan Ehler
Sandi Smith-Grove & Richard Grove
Molly Smith-Olsson & Rasmus Olsson
Stephen Smyers/Judith Keyes
Andrew Sniderman & Jennifer Francis
Simpson & Helen So
Scott & Jeanne Sommer
Inkeun & Soonja Song
Lars & Dominique Sorensen
Nancy Sorensen
Beverly & Harry Souza
Cheryl & Costas Spanos
Sunder & Julie Srinivasan
David & Jennifer Stanton
Kathy & Steve Stark
Robert & Rebecca Stearns
Neil Steingrube & Naomi Hicks
Janice & Ray Stephens
Annmarie Stern
Fred Stone
Stacie & David Stone
Chris & Karen Strachan
Jim & Maureen Straw
Cliff & Sharron Streib
Anthony & Pamela Striplen
Dave & Lynn Studeman
John Suess
Arlene & Bill Sweezer
Debbie & Peter Talbot
Rian & Julie Taylor
Anil Thayamballi & Nita Mehta
Carolyn Thelemaque
Brad & Susan Thompson

James & Ruth Thornburg
Jean Timken & Steve Cuny
Michael Timms & Sadie Cuming
Frank & Patricia Tinley
Agnes & David Tobiano
Clifford & Nancy Tong
Kiri & Ken Torre
Lisa & Fred Toth
Keith & Julie Towne
Graden & Stacey Travis
Anton & Lada Tremsina
Tony & Stacey Tryba
Caroline & Gary Tsuyuki
Michael & Theresa Tuohy
Cheryl Tyler & Mitch Clark
Vicki & Mark Unger
Bill & Laurie Usinger
Joan & Keith Vaisnor
Claudia Valas/Carl Buchin
Michael & Laura Van Duren
Mr. & Mrs. Thomas Van Ormer
The Van Oss Family
Lance & Kathryn Varellas
Tom & Laura Varner
Nancy A. Vasko
Tom & Donna Velken
Phillip & Maria Villanueva
Kathleen Wahlberg
Sherwood & Janet Wakeman
Carol Walker
Steve & Frances Wallace
Dennis & Nancy Wallen
Gene Wang & Sue Zhang
Liang Wang, Wendy Guo
Jim & Anoushka Wardy
Laurie & Stephen Ware
Greg & Sandy Warner
Lyll & Lisa Warren
Scott & Annmarie Warren
Doug & Suzanne Warrick
John & Diane Watson
Leslie & John Weaver
Hal & Mayumi Webber
Anne & Al Webster
Anne & Michael Wegher
Claude & Sharon Weiller
Karen Weiskirch-Kelly
Randall & Heidi Wenokur
Richard & Ranjini Wheeler
Whelehan Family
Charles White & Holly Wieber
David White & Gail Reynolds
Piers & Eleanor Whitehead
Lynne & Mike Whyte
Brian & Roxanne Wieber
John & Debbie Wilhera
Tim & Michelle Wilbur
Karen & Craig Wilcox
Will & Liz Wilkinson
John Willbrand & Lisa Williams
Don & Elaine Williams
Jeanne & Mike Williams
Judy & Ken Williams
Shellie Beratta Williams
Pamela & Carl Winther
Marta & Greg Woehrle
Margarita Woodbury & Al Vaccaro
Glenn & Leota Woods
Margaret & John Worden



Mike Meneghetti
Stanley Science Teacher

Chris & Judy Wright
Leslie & Robert Wright
Chia-Hsing Wu & Tun-Ping Yu
Herman & Dorothy Wulf
Charlene Yang
Guoliang & Guang Ming He Yang
Xiaohong Guan & Li Yao
Ambrose & Grace Yau
Joseph & Rachel Young
Melinda Young & Steve Frankel
Wilcox & Grace Young
Kin Man Yu
Glen Zamanian
Beverly D. Zamolo
Jack & Dora Zaul
Jim & Jackie Zayac
Gregory & Beata Zegarowski
James & Min Shen Zhou
George & Sarah Zimmerman
Jeff Zimmerman
Ron & Carol Zuckerman
The Zuehlke Mara Family
Michael Zwerdling & Lisbeth Astrup

"LASF continues to be a tremendous partner in our 6th grade science program. In addition to the three outstanding units LASF brings to our classrooms each year on Rocks and Crystals, Harnessing Electrons and Chemistry II, I have been the very fortunate recipient of two LASF grants.

My first grant provided the funding to enhance my Magnetic Levitation train unit. Every 6th grader at Stanley now does this unit, and it continues to be a highlight in the 6th grade science experience. The classroom literally becomes a working research-and-development lab as students use simple materials and a variety of testing stations to design a train that levitates and moves down a 16-foot-long track.

I received my second grant last year. I was able to purchase five large stream tables. These tables enable students to carefully examine many aspects of river morphology, including erosion, deposition, bed load, suspended load, and how time and slope influence the formation and life-cycle of a river."

Honor Roll
(\$600-\$999)
Anonymous
Bryant & Inga Bennett
Howard & Sherry Hoover
Jim Keefe & Lorna Lee
Jim & Eddie Reiter

Sponsor
(\$301-\$599)
Anonymous
James & Sandra Bagnall
Mark & Kim Brast
Marilyn & Jerry Burke
Elmer & Paulette Chinn
Joan & Tom Cleveland
Collin & Nancy Crawford
Marshall & Anne Grodin
Dr. Robert Kieckhefer
Bruce & Nancy Reitz
Cheri & Glenn Smith
Hal & Diane Steuber
Michael & Sarah Sullivan
Woodard Family Foundation
John Yamaguchi & Lisa Maibach

Donor
(Up to \$300)
Joyce Abbott
Anonymous (9)
Bryce & Marcia Bagnall
Martin Bardi & Romina Kleiman
Frank & Alice Barham
Robert & Annette Barter
Kenneth & Janet Beebe
Geoffrey & Sally Bellenger
Gerald & Sarah Berchtold
Brad Berman, MD
Mr. & Mrs. & Martha Billman
Marielle Boertz
Malcolm & Sylvia Boyce
Kelvin & Carol Brown
Don Brunner & Cheryl Dembe
Allen & Elizabeth Bush
Israel & Martha Charo
Paul & Brenda Chodroff
John & Joann Coakley
Charles & Shirley Coburn
Jack Coulter
Doug & Ginny Cowden
Doug & Suzanne Cunningham

Tom & Lois Daane
Charles & Carolyn Davis
Lynn DeLaurentis
Jean Galbraith Derrington
Eric & Jennifer Dovichi
Carol & Mark Drevno
Karin Eames
John Eaton & Beth Ferree
Barbara Elliott
Hart & Betty Fairclough
Susan Fairclough
Elisa Feingold
Michael & Susan Ferone
Richard & Ann Filson
R.J. & Madeline Fleischmann
Roger & Candice Fontenot
Edward Forman & Janet Swanberg
Bret & Marguerite Foster
Elton & Ruth Fox
Jerry & Arlene Fox
Judy & Kent Garvens
Bob & Hildy Golden
Jan Gordon
Frank & Mary Grannis
Bill & Shellie Hagerman
Tom Hagler & Alice Stauffer
Millicent Hamberger
Martha & Jamie Harris
Lawrence & Marilyn Hawley
Paul & Linda Heilmann
R. Malcolm Hendry
Julie Johnson
Todd & Lisa Johnson
Erling & Patricia Horn
James M. Hotchkiss, Jr.
David & Dolores Iventosch
Rene & Donna Jerez
Chester & Elizabeth Jung
Richard Kamrath & Kathryn Ikeda
Susan & Bruce Kaufman
Kevin & Theresa Keegan-Twombly
Mr. & Mrs. Won Jung Kim
Greg & Kelsey Kobayashi
Don & Caryl Koberg
Herb Korpell
Tom Krakow
Kathleen Krentz
Philip A. Lathrap
Wayne Lawson

Dr. & Mrs. Sheldon N. Lewis
Norman & Elise Lustig
Budd E. MacKenzie
Tucker & Nancy Main
Martin & Catherine Majestic
Robt & Ruth Manlove
George & Sharon Marshall
James & Wendy Martin
Mrs. Kathleen McAdam
Tom & Pam McCauley
Neil & Barbara McDaniel
Dick & Patti McKinley
Thomas McManus
Boardman & Betty Moore
Ben & Kathryn Mulkey
Suzanne Nyhus
Jeffrey & Laura Patton
Matthew & Suzan Pemberton
Karen Peterson
Robin & Jeff Phillips
Ron Pipa & Frances Moy
Richard & Shelley Powers
Robert & Janice Pulford
Ned & Marcia Putnam
Martina Quintero
Margrethe & Mike Ramirez
James & Sandra Rhodes
Vicki Richardson
John & Gail Riordan
Mrs. Edward Rosston
Paul & Patti Sax
Douglas R. Schwartz
Sanford & Jane Sherman
Jim & Danielle Signorella
Herb & Betsy Sihner
Alfred & Marilyn Simonsen
Frances Singer
Small Family
Sherilynn Smart
Bob & Mary Smiths
Joan Sorensen
Stanley & Anne Soule
Lisa Souza
Bill & Melanie Speir
Richard & Linda Staaf
Paul & Linda Swatek
Kathleen Toups & Dorian Liepmann
Tom Traub & Jeffrey Massey
Nancy Verrier
Alan & Nel Wagner



Sally Bruce
Springhill 1st grader who won LASF's *Luck of the Draw* and received free professional framing of her artwork from Fastframe of Lafayette, plus saw her work on exhibit at Chow and other venues

"When I won the drawing, I felt very good. My mom, dad and brother saw my picture hanging at the restaurant. My mom said, 'Good job, Sally!'"

Community at Large

Donor

continued
Fausta Walsby
John & Barbara Watkins
Art & Karen Webb
Howard & Helene Weber
Don & Heidi Weidlein
Jonathan & Kiyo Weiss
Tom White
Burke L. & Helen H. Winget
Teresa Wong
Carly & Bob Wood
Scott Yokoi & Suzanne Ishii

Honors/Memorials

In honor of Kitty and Harvey Rudman and Karen and Tom Mulvaney
Jerry & Melody Howe
Weintraub

In honor of Katherine and Paul Welcomer (Jesse, Jake, Nate), Sheila and Chris Maher (Patrick, Thomas), Catherine and Matt Bertics (Scott, Andrew), Sue Keeley (Graham, Piper), Jill Yost and Bruce McArthur (Sean, Alex), Melissa and Jack Moehle (Erica, Nick)
Anonymous

In honor of former Acalanes dance teacher Millicent Hamburger:
The Millicent Hamburger Fund

In memory of Rebecca Bar-Lev
Jack & Marilyn Jenkins-Stark

In memory of Marie Krakow
Tom Krakow

In memory of Dr. David M. Marquis
Dr. Marilyn Alder Marquis



Brett Williams
Burton Valley
3rd grader
[another LASF Luck of the Draw winner]

"I selected the 'Library' piece [to display at last year's LASF Art Fair] because I had the most

fun making it. I liked creating this picture because I liked the detailed drawing. I like LASF art and science because there are always fun activities and you always learn new things from the lessons."

Real Estate Partners

Distinguished Honors

Patricia Battersby,
Village Associates
Susan & Ron Rothenberg,
Intero

Major Donor

Joan Cleveland,
Village Associates
Ann H. Ward,
Village Associates

Sponsor

Joan Eggers, Village Associates
Dick Holt, Coldwell Banker
Mary Lou Till, Lamorinda
Funding Group

Donor

Cal Fox, Prudential
California Realty
Dennis Reed, Better Homes

Business Donors

Highest Honors

(\$5,000-\$9,999)
East Bay Community
Foundation
Lafayette Chamber of
Commerce
Oakwood Athletic Club
Anonymous

Distinguished Honors

(\$2,500-\$4,999)
Ames Seminars

Major Donor

(\$1,000-\$2,499)
InfoSys Computer Consulting
& Training/Edward & Renee
Ziedan
Lafayette Book Store

Honor Roll

(\$600-\$999)
Stonehenge Builders/
Don Ridings
James Phillip Wright Architects

Sponsor

(\$301-\$599)
American Power Services Co.
Cole Project Management LLC
Kiwanis of Moraga
Security Pacific Real Estate
Sharp Bicycle

Donor

(Up to \$300)
Douglah Designs Inc.
Madden Associates
Mt. Diablo National Bank
Right Away Redy Mix
The Treasure Trove

In-Kind Contributions

Alexandria Deavolon Abbot
Brett & Pam Alsterlind
American Conservatory Theater
Andronico's Market,
Walnut Creek
The Art Room
Jan Askin, Lafayette School
Auntie Anne's Pretzels
Ken & Joni Avery
Mark & Brenda Balfrey
Patricia Battersby
Beach Blanket Babylon
Chip & Beth Bissel
Blackhawk Grille
Blackhawk Museum
Blodgett's Floor Covering
Mike & Erin Bloom
Bo's Best
Bonnie Stephens Massage
Therapy/Bodywork
Tammy & Michael Borosky
Jim & Robin Bowers
Kathy Bowles
Fred Brill, Stanley School
John W. Bruns D. D. S.
Bucher Family
Build-a-Bear Workshop
Buttercup Kitchen
Ed & Sally Cairns
California Canoe & Kayak
California Academy of Sciences
California Shakespeare Festival
Calzone's
Janet Carlson,
Acalanes High School
Cartoon Art Museum
Casa Orinda
Celia's Mexican Restaurant
Chabot Space & Science Center
Al & Terry Chapparo
Garry & Heidi Chew
Children's Discovery Museum
Chow's
Chritton Family
Circuit City Foundation
James Claytor
Joan Cleveland
Collins Family
Color Spot
Companion Care
Costco
Cotton & Co.
Courtyard Café
Crab House
Kevin & Amy Cullen
Cybelle's Pizza
Tom Dahl
The Damn Neighbors
Dave Bricetti Software
Security Pacific Real Estate
Sharp Bicycle
Cathy DeForest,
Lafayette Art Gallery
Diablo Foods
Diamond K Supply
Douglah Designs
Sean Duffy
Joanne Dunne
Ron Dygert,
Acalanes High School
El Charro
Jon & Alex Engs
Entourage Salon & Day Spa
Mark & Carol Escajeda
Roger Falcone
Fastframe of Lafayette
Drew & Bonnie Field
Fillinger Photography
Filoli House & Gardens
Fine Arts Museums of SF
Carl Fox
Gap Foundation
Full Spectrum
Communications
Michael & Teresa Gerringer
Fiamma Giger
Gold Coast Chamber Players
Golden Gate Fields
Golden Skate
Amy & Ross Goodheart
Ross & Amy Goodheart
Gordon Biersch
Great America
Margot Green
Todd & Dana Green
Greenhorn Creek
Jay & Carole Hagglund
Hair Associates
Kathy Hamilton
Wendy Patterson,
Happy Valley School
The Cotton Patch
Mark & Lissa Heptig
Dick Holt
Jerry & Dina Honda
Husky House
Insight Holdings
Mary Illyn
Craig & Margaret Isaacs
Itsabella
Jackson's Wine & Spirits
Elizabeth Jameson
Daniel & Judy Jernigan
Jordan Vineyard & Winery
The Jungle
K A B Printers
Kaffee Barbara
Karvasales Photography
Keep It Simple Sewing
Stephen King &
Carolyn Ockels
La Tapatia
Lafayette Health Club
Lafayette Academy
Lafayette Parks & Recreation
Lafayette Park Hotel

Lamorinda College Admission

Counseling
Land's End
Jill Landau,
Lafayette Art Gallery
The Landry Family
Lark Creek
LASF Executive Board
LASF Board
Lavendar Lori
Art Lehman
Herbert & Resa Lenczowski
Bruce Lengacher,
Acalanes Choral Group
Linda Evans Fitness
Lisa Evans Photography
The Lyman Family
Dan & Karen Lynch
Lyverse Family
Jerry & Judy Mahl
Mangia Restaurant
Larry & Suzanne Margerum
Jim & Carol Marquis
Martha Kean Pottery
Frank & Ann Masi
Jon & Melissa Masland
L. S. Mason & Associates
Masse's Billiards
Massey Family
Mattel
Goia & Sean McCarthy
McDonald's
Erin McGlynn
Meritage
Mt. Diablo National Bank
Bill & Linda Mutch
Nicholson Ranch
Norsport
O Olive Oil
Oakland Museum
Oakland Athletics
Oakwood Athletic Club
Orchard Garden Supply
Pacific Coast Restaurants
Jerome & Grace Paolini
Party Angels
Pam Passey,
Lafayette Art Gallery
Passanisi's Greenhouse Plus
Patisserie Lafayette
Payless Bating Cages
Fred & Sandra Pazos
Peets Coffee & Tea
Caesar Perales, CPA
Kurt Piper
Playhouse West
Precious Memories
Prive Jewelers
Brian & Julie Quinn
Mike & Anne Marie Quinn
Reflexion Skin Care & Hair
Tim & Cindy Reidy
Renaissance Rialto
Joan & David
Ripley's Believe It or Not
Deborah Dobin Robinson
Chris Roscoe
Round Hill Country Club
Round Table Pizza
Harvey & Kitty Rudman
Sadie Cuming, Lafayette Art Gallery
Jon & M.J. Sammann
San Francisco Giants
San Francisco Zoo
San Jose Sharks
Sandra Eaton Photography
Scandia Family Center
Paul & Joanne Schweibinz
Security Pacific Realty
See's Candy, Inc.
Sharp Bicycles
Sharpe Tennis at Rancho Colorados
Ben Shaw, Burton Valley School
Shirley Siegel
Skinsense
Sonnenberg Designs
Specialtee's
Spengers
The Stinking Rose
The Storyteller
Tim & Ingrid Sullivan
Super Station Car Wash
Susan Erickson, Lafayette Art Gallery
Susan Foord Catering
The Swatt Family
Take One Video
Tanner & Reichold Orthodontics
Thomas R. Tanneyhill
Michael Tebb Landscape Design
Tech Museum of Innovation
Dan & Stephenie Teichman
The Container Store
The Karate & Fitness Place USA
The Natural Medicine Clinic
Andrew Thomas
James & Ruth Thornberg
Mary Lou Till
Togo's
Toot Sweets
Dan & Audrey Tormey
Town Hall Theatre Company
Trader Joe's
The Treasure Trove
The UPS Store
Laura Van Duren
Kyle & Nancy Vinther
Walnut Creek Sports & Fitness Club
The Walters Family
Warren Emmett Rice,
Lafayette Art Gallery
Wax Museum at Fishermans Wharf
Mary Wheeler, Lafayette Art Gallery
Whole Foods
Wild Bird Center
Carla Williams-Gelbaum,
Lafayette Art Gallery
Winchester Mystery House
Wine Thieves
Wine Wareables
Mary & David Winn
Witherspoon Art Gallery &
Frame Shop
Bruce Wodhams, Springhill School
Jodi & Greg Young
Mike Zampa & Lynn Carey
Zeum

Our Dedicated Instructors

We extend our sincere appreciation and recognition to our dedicated instructors so imperative to the delivery of our programs and the enthusiasm with which they are received:

Esther Archer
Joan Batcheller
Laurie Bellet
Kim Berger
Lori Brueckner
Barbara Butlin
Patti Callison
Linda Carroll
Jackie Carson
Pati Connert
Barbara Cole
Sadie Cuming
Kim Curiel
Tommy Davidson
Leslie de Boer
Cathy DeForest
Xiomara Di Maio
Jean Ellisen
Kymry Esainko
Mary Fetting
Rich Fongheiser
Arlene Fox
Susan Fuller
Patrice Fusillo
Jeanne Gabiati
Jeannine Gasson
Carla Gelbaum
Ruth Gendler
Mic Gillette
Sandy Goldberg
Deene Goodlaw
Emily Haas
Kate Hardy
Kristen Holbrook
Andrew Jokelson
Sue Katibah
Tara Khalvati
Lisa Klein
Melissa Kujawski
Wendy Lacy
Sally Lafferty
Mary Laird
Jill Landau-Reich
Sarah Leonard
JoAnn Lieberman
Barrett Lindsey-Steiner
Margaret Lucas-Hill
Alison Luterman
Julie Lyverse
Bonnie MacNab
Sheila Maher
Gunter Mannich
Joan Marable
Martha Marquand
Melissa Masland
Jody Mattison-German
Colleen McCormick
Mary McCosker
Regina McGrath
Ana Menendez
Kathy Meyer
Tureeda Mikell
Judy Miller
Terry Miller
Marianne Morgan
Matt Morrish
Alex Murzyn
Lore Musser
Sabina Nies
Chiyo Nukaga
Mary Jean Odmark
Dorothy Owens
Karen Peterson
Susan Piatt
Chad Pound
Fred Randolph
Ginni Reynolds
Gail Riordan
Joue Roberts
Joy Rosenberg
Lesah Ross
Pat Schiedler
Susan Schoenrock
Doug Senz
Jeanette Shearer
Jerome Simas
Dagmar Slovak
Kathy Sobel
Usha Srinivasan
Mark Stanley
Pamela Striplen
Linda Sutton
Tom Taneyhill
Cathy Terry
Cindy Towle Kephart
Kim Vanderheiden
Gigi Voris
Katherine Welcomer
Gail Wherritt
Kurt Wilson
Ellen Winnick
Beth Young
Jennifer Young
Bill Younger

Corporate Matching Gift Program

The following companies participated in the Corporate Matching Gift program this year, resulting in additional funds for LASF.

Aetna Foundation
Amgen Foundation
Bank of America
Barclays Global Investors
Bowles & Verna LLP
California Healthcare Foundation
Calex Manufacturing Co.
The Capital Group Companies Charitable Foundation
Charles Schwab & Co., Inc.
ChevronTexaco
Clorox Company Foundation
DFS Group Limited
Electronic Arts
Fremont Group Foundation
The Gap
GATX Corporation
John F. and Mary A. Geisse Foundation
Genentech, Inc.
General RE Corporation
Goldman, Sachs & Co.

IBM
Merrill Lynch & Co.
Microsoft
Moody's Foundation
Gordon and Betty Moore Foundation
The J. P. Morgan Chase Foundation
PG&E
Prudential Foundation
RR Donnelley Foundation
RREEF Outreach
SBC Foundation
Simpson Manufacturing Company
Sun Microsystems
Toll Architectural Graphics, Inc.
Union Bank of California
U.S. Bancorp
VISA International
Wells Fargo Bank

As a nonprofit educational foundation, LASF qualifies as a recipient in many employer-sponsored matching gift programs that support the favorite causes and charities of their employees. Arranging for matching gifts is one of the best ways that individual donors can help LASF. Every dollar you donate to the Foundation through such a program may be doubled—or even tripled—at no extra cost to you! In addition to the above current-year participants, the companies listed to the right match employees' gifts to qualified recipients, often dollar-for-dollar or better. If your company is on the list, contact your human resources department for an application on which you can list LASF as a recipient. If your company is not on the list, ask if it has a matching gift program, and if LASF qualifies for it. Thank you!

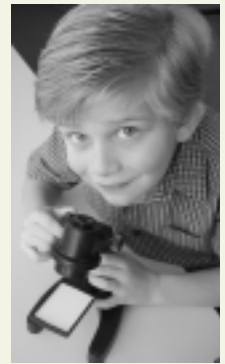
A-D Electronics, Inc.
AT&T
Access Energy Corp.
Advance Micro Devices
Aetna Foundation
Alco Standard Corp.
Alex. Brown & Sons
Alexander & Baldwin Foundation
Allendale Mutual Ins. Co.
American Brands, Inc.
American Express Co.
American Home Products
American National Bank
American National Can Co.
Ameritech
Amfac, Inc.
Amgen Foundation
Analog Devices, Inc.
Anchor Capital Advisors Inc.
The Andersons Management Corp.
AON Foundation
ARCO
Autodesk
BP America
BP/Amoco
Bank of America
Bank of Boston
Bank of the West
Bankers Trust Co.
Barclays Bank PLC
Barclays Capital
Barnes Group, Inc.
Barnes & Roche, Inc.
Barrett Design, Inc.
Barrett Technology, Inc.
Becor Western, Inc.
The Bergen Record Corp.,
Bill Communications, Inc.
The Blount Foundation, Inc.
The Boeing Co.
Brakeley, John Price Jones
Bernd Brecher Institutional Advancement Programs
Boston Properties
Bowles & Verna LLP
Buell Industries, Inc.
Buffalo Color Corp.
Bunge Corp.
Burroughs Wellcome Co.
CPC International, Inc.
Cabot Corp.
Cabot Stains
Calex Manufacturing Co., Inc.
California Healthcare Foundation
Callanan Industries, Inc.
The Capital Group Companies Charitable Foundation
Carson Products Co.
Carter-Wallace, Inc.
Castle and Cooke, Inc.
CertainTeed Corp.

Chamberlain Manufacturing Corp.
Champion International Corp.
Charles River Laboratories
Charles Schwab & Co., Inc.
Charles Steward Mott Foundation
The Chase Manhattan Corp.
Chemical Bank
ChevronTexaco
Chicago Tribune Co.
Chubb Life Insurance Co. of America
Circuit City Stores
Cisco Systems Foundation
Citicorp/Citibank, N.A.
C.J. Webb, Inc.
Clorox Corp.
Clorox Company Foundation
Coats & Clark, Inc.
The Coca-Cola Co.
Colgate-Palmolive Co.
Collins & Aikman Corp.
Commonwealth Ins. Co.
Congoleum Corp.
Consumer Programs, Inc.
The Copley Press, Inc.
Copley Real Estate Advisors
CoreStates Financial Corp.
Cowles Media Co.
Cray Research, Inc.
Credit Suisse First Boston
DFS Group Limited
The Danforth Foundation
The David & Lucile Packard Foundation
Del Monte Foods
Delta Health Systems
Deluxe Corp.
Deutsche Bank Americas Foundation
DFS Group Limited
Difco Laboratories
Digital Equipment Corp.
Donaldson, Lufkin & Jenrette
DowElanco
Duke Power Co.
Eaton Corporation
Ecolab, Inc.
Electronic Arts
Elf Aquitaine, Inc.
ELF Atochem No. America
Eli Lilly and Co.
Ensign-Bickford Foundation
Everen Securities
Exxon Corp.
Facet Enterprises, Inc.
Federal Home Loan Mortgage
Federated Department Stores Foundation
Fiduciary Trust Co. (Boston)
Fireman's Fund Insurance Co.
First Bank Systems, Inc.
First Data Merchant Services Corporation

First Mississippi Corp.
FleetBoston Financial Foundation
Fleming Cos., Inc.
Frederic W. Cook & Co., Inc.
Freedom Forum
Fremont Group Foundation
Funderburke & Associates
Gannett Co., Inc.
The Gap, Inc.
GATX Corporation
Gary-Williams Co./The Piton Foundation
Geisse Foundation
GenCorp., Inc.
Genentech, Inc.
General Cable Co.
General Defense Corp.
General Mills, Inc.
General Re Corporation
Gilman Paper Co.
The Glenmede Corp.
GMAC-RFC
Goldman, Sachs & Co.
Goldome
Gordon and Betty Moore Foundation
Greenbriar Capital Corp.
Hambrecht & Quist LLC
Hamilton Bank
Hampton & Harper, Inc.
Hartford Steam Boiler Inspection & Insurance Co.
H.B. Fuller Co.
H.J. Heinz Co.
Heublein, Inc.
Hewitt Associates
The Hillman Co.
Hubbell, Inc.
Huffy Corp.
IBM
IU International
Illinois Tool Works, Inc.
IMCERA Group, Inc.
Imo Industries Inc.
Indiana Bell Telephone Co.
Ingstron Corp.
Integon Corp.
J.M. Huber Corp.
J.P. Morgan Chase Foundation
James Irvine Foundation
James River Corp.
Jefferies & Co., Inc.
John Grezenbach & Assocs.
John Wiley & Sons, Inc.
Johnson & Higgins
Joseph E. Seagram & Sons
Keefe, Bruyette & Woods
Kemper National Insurance Companies
Kinder Morgan Foundation
Kingsbury Corp.
Kiplinger Washington Editors
Lamorinda Floor Fashion
La Salle Financial
Lawyers Co-Op Publishing
Lehman Brothers
Leo Burnett Co., Inc.
Levi Strauss Foundation
Lotus Development Corp.
The Lubrizol Corp.

Lucky Stores, Inc.
Lukens Inc.
LVMH Selective Distribution Group
MacArthur Foundation, J.D. & C.T.
Macy's West
Maguire Oil Co.
Malinckrodt Medical, Inc.
Marine Midland Banks, Inc.
Mazda North America, Inc.
McDonald's Corporation
McKesson HBOC Foundation
Mebane Packaging Corp.
The Mechanics Banks
Medtronic, Inc.
Merit Oil Corp.
Meritor Savings Bank
Merrill Lynch & Co.
Microsoft
Midland Montagu
Mobil Oil Corp.
Moen, Inc.
Monstanto Fund
Moody's Foundation
Gordon and Betty Moore Foundation
Morgan Stanley Dean Witter & Co.
Motorola, Inc.
Murphy Oil Corp.
NCR, Inc.
NACCO Industries, Inc.
National City Corp.
National Home Life Assurance
National Intergroup, Inc.
National Westminster Bank USA
Neles-Jamesbury
New England Business Service
The New England Education Loan Marketing Corp.
New Jersey National Bank
New York Life Foundation
The New York Times Co.
The New Yorker Magazine
Nike, Inc.
Norton Co.
Olin Corp.
Pacific Enterprises
Panhandle Eastern Corp.
Paramount Communications, Inc.
Parker-Hannifin Corp.
Partech International, Inc.
PepsiCo, Inc.
Pfizer, Inc.
PG&E
The Pioneer Group, Inc.
Pitney Bowes, Inc.
Pitway Corp.
Playboy Enterprises, Inc.
Polaroid Corp.
Potlatch Corp.
Preformed Line Products Co.
Premark International, Inc.
Provident Financial Corporation
Prudential Foundation
Quaker Chemical Corp.
The Quaker Oats Co.
Quantum Chemical Corp.

RBC Dain
Rauscher Foundation
RJR Nabisco Inc.
RR Donnelley Foundation
Reader's Digest
The Reliable Life Insurance Co.
The Research Institute of America
Reuter America Inc.
Revlon, Inc.
Rockefeller Brothers Fund, Inc.
Rockefeller Family & Associates
The Rockefeller Group
Rohm & Haas Co.
Rolling Thunder, Inc.
Ross, Johnston & Kersting, Inc.
RREEF Fund
Ryco Division, Reilly-Whiteman
SBC Foundation
SKF USA, Inc.
Safeco Corp.
The St. Paul Companies
Salomon Brothers, Inc.
The Samuel Roberts Noble Foundation
Schulman Management Corp.
Scientific Brake & Equipment Co.
Scripps Howard, Inc.
Sedgwick James, Inc.
Shaklee Corp.
Shawmut National Corp.
Shearson Lehman Brothers, Inc.
Sheldahl, Inc.
Shin-Etsu Silicones of America
Silicon Graphics
Simpson Manufacturing Company
Skinner Corp.
Sonat, Inc.
Sony Corporation of America
Spear, Leeds & Kellogg
Sprint Foundation
Stone & Webster, Inc.
The Stride Rite Corp.
Student Loan Marketing Assn.
Subaru of America
Sun Microsystems Foundation
Sutro & Co.
Swiss American Securities, Inc.
Syntex Corp.
T. Rowe Price Associates, Inc.
The Teagle Foundation, Inc.
Technometrics, Inc.
Tektronix, Inc.
Tellabs Operations, Inc.
Temple-Inland, Inc.



Weston Borosky
Burton Valley 2nd grader

"Science is my favorite thing so I really like LASF, because we get to touch and experiment with things. It's a lot better than just reading about it."

Tetra Tech EM Inc.
Thomas J. Lipton, Inc.
Time Warner, Inc.
Times Mirror
Toll Architectural Graphics
Tosco Refining Company
Toyota Motor Sales, USA, Inc.
Transamerica Corporation
Travelers Express Co.
Triskelion Ltd.
UBS
UJB Financial Corp.
UPS
U.S. Bancorp Foundation
UST, Inc.
Union Bank of California
Union Camp Corp.
United States Borax & Chemical
United States Leasing International
U.S. Bancorp Foundation
US WEST, Inc.
VISA International
W.K. Kellogg Foundation
Wachovia Bank of No. Carolina
Wallace & Wallace, Ltd.
Ware & Freidenrich
The Washington Post Co.
Waste Management, Inc.
Wells Fargo Bank
West One Bancorp
Wheelabrator Technologies, Inc.
The Williams Companies, Inc.
Wisconsin Bell, Inc.
Working Assets
W.W. Granger, Inc.
W.W. Norton & Co.
XTRA Corporation